

Soffianti a canali laterali GK902P Side channel blowers GK902P

General Europe Vacuum S.r.l.
Via del Commercio, 9 - 20090 Buccinasco (MI) - Italy
Tel. +39 02.48.84.11.20 - e-mail: info@gevac.com - www.gevac.com



GENERAL EUROPE VACUUM S.r.l.
Tecnologie Del Vuoto

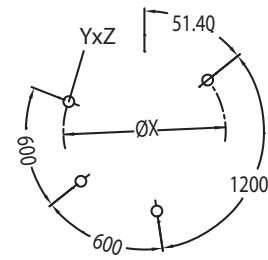
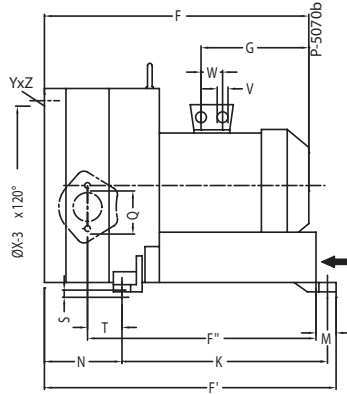
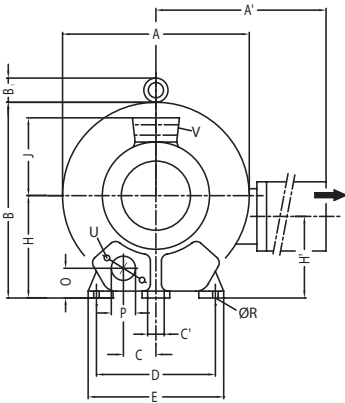


Le soffianti a canali laterali sono caratterizzate da affidabilità e bassi costi di esercizio. Risultano silenziose, presentano compressione senza olio e senza pulsazione. Possono essere impiegate in pressione o in depressione per esercizio in continuo.

Reliable, low running costs and noiseless side channels blowers running in compressions without oil and pulsation.

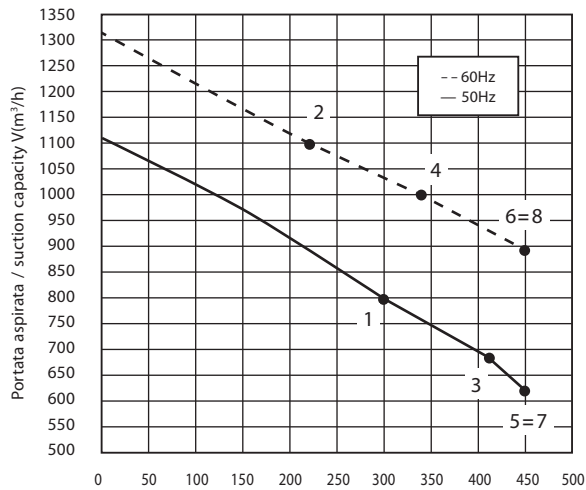
Running both in pressure or suction in steady running cycle.

Dimensioni/Dimensions - mm



	Phase Fase	A	A'	B	B ₁	C	C'	D	E	F	F'	F''	G	H	H'	J	K	M	N	O	ØP	Q	ØR	S	T	U	V	W	ØX	YxZ	X-holes X-fori
GK902PGEV12.5T	3~	615	780	607	16	103.5	15	360	415	752	786	634	345	300	234	197	533	39	230	92	G4"	150	15	21	117	M12x30	4xM40x1.5	54	490	M12x30	51.4"/120°/240°
GK902PGEV16.5T	3~	615	780	607	16	103.5	15	360	415	752	786	634	345	300	234	197	533	39	230	92	G4"	150	15	21	117	M12x30	4xM40x1.5	54	490	M12x30	51.4"/120°/240°
GK902PGEV20T	3~	615	780	607	16	103.5	15	360	415	752	786	634	345	300	234	197	533	39	230	92	G4"	150	15	21	117	M12x30	4xM40x1.5	54	490	M12x30	51.4"/120°/240°
GK902PGEV25T	3~	615	780	607	16	103.5	15	360	415	812	786	634	345	300	234	197	533	39	230	92	G4"	150	15	21	117	M12x30	4xM40x1.5	54	490	M12x30	51.4"/120°/240°

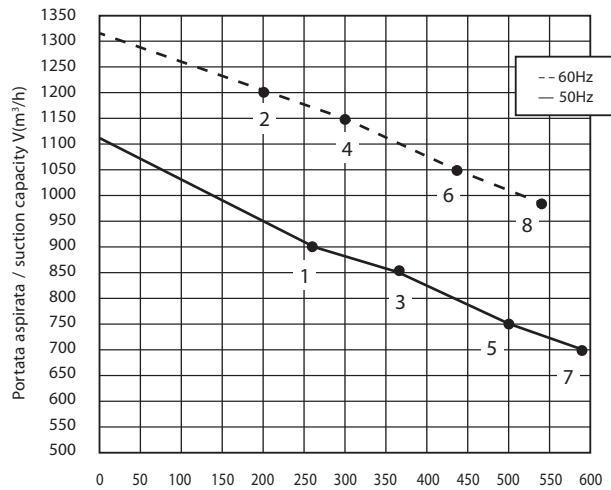
ASPIRAZIONE / EXHAUST



Depressione / inlet vacuum (mbar rel.)

Tolleranza curve +/- 10%. I dati indicati possono essere variati senza preavviso.
Tolerance of +/- 10%. The data may change without any notification.

COMPRESSIONE / COMPRESSION



Pressione / pressure (mbar rel.)

Curve Curva n.	Model Modello n.	Frequency Frequenza (Hz)	Output power Potenza (kW)	Voltage Voltaggio (V)	Rated current Assorbimento (A)	Noise Rumorosità dB (A)	Weight Peso (Kg)
1	GK902PGEV12.5T	50	12,5	345-415Δ/ 600-720Y	28,0Δ/ 16,2Y	74	187
2	GK902PGEV12.5T	60	14,5	380-480Δ/ 660-720Y	29,0Δ/ 16,7Y	84	187
3	GK902PGEV16.5T	50	16,5	345-415Δ/ 600-720Y	35,0Δ/ 20,0Y	74	197
4	GK902PGEV16.5T	60	19,0	380-480Δ/ 660-720Y	36,5Δ/ 21,0Y	84	197
5	GK902PGEV20T	50	20,0	345-415Δ/ 600-720Y	40,0Δ/ 23,0Y	74	204
6	GK902PGEV20T	60	23,0	380-480Δ/ 660-720Y	42,0Δ/ 24,2Y	84	204
7	GK902PGEV25T	50	25,0	345-415Δ/ 600-720Y	52,0Δ/ 30,0Y	74	211
8	GK902PGEV25T	60	29,0	380-480Δ/ 660-720Y	52,0Δ/ 30,0Y	84	211