

Soffianti a canali laterali GK901

Side channel blowers GK901

General Europe Vacuum S.r.l.
Via del Commercio, 9 - 20090 Buccinasco (MI) - Italy
Tel. +39 02.48.84.11.20 - e-mail: info@gevac.com - www.gevac.com



GENERAL EUROPE VACUUM S.r.l.
Tecnologie Del Vuoto

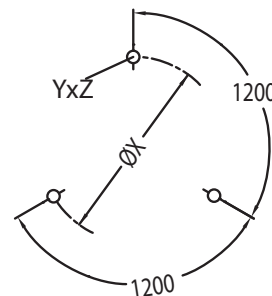
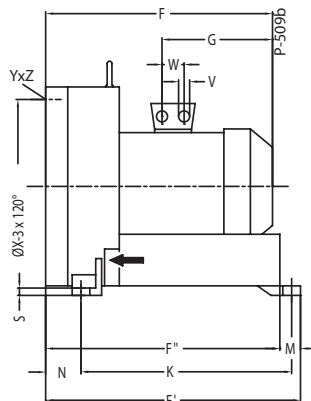
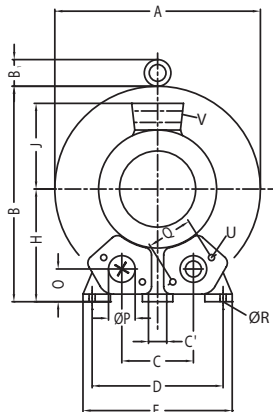


Le soffianti a canali laterali sono caratterizzate da affidabilità e bassi costi di esercizio. Risultano silenziose, presentano compressione senza olio e senza pulsazione. Possono essere impiegate in pressione o in depressione per esercizio in continuo.

Reliable, low running costs and noiseless side channels blowers running in compressions without oil and pulsation.

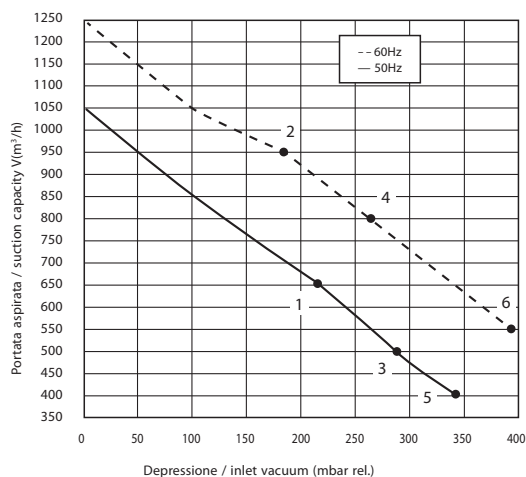
Running both in pressure or suction in steady running cycle.

Dimensioni/Dimensions - mm

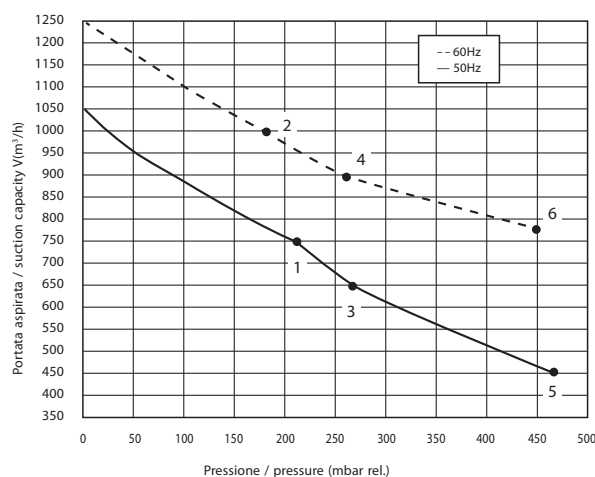


	Phase Fase	A	B	B'	C	C'	D	E	F	F'	F''	G	H	J	K	M	N	O	ØP	Q	ØR	S	U	V	W	ØX	YzZ	X-holes X-fori
GK901GEV8.5T	3~	550	569	55	207	15	360	415	525	644	605	268	300	167	533	39	89	92	G4"	150	15	21	M12x30	4xM32x1,5	42	490	M12x30	0°/120°/240°
GK901GEV12.5T	3~	550	569	55	207	15	360	415	611	644	605	345	300	197	533	39	89	92	G4"	150	15	21	M12x30	4xM40x1,5	54	490	M12x30	0°/120°/240°
GK901GEV18.5T	3~	550	569	55	207	15	360	415	611	644	605	345	300	197	533	39	89	92	G4"	150	15	21	M12x30	4xM40x1,5	54	490	M12x30	0°/120°/240°

ASPIRAZIONE / EXHAUST



COMPRESSIONE / COMPRESSION



Tolleranza curve +/- 10%. I dati indicati possono essere variati senza preavviso.
Tolerance of +/- 10%. The data may change without any notification.

Curve Curva n.	Model Modello n.	Frequency Frequenza (Hz)	Output power Potenza (kW)	Voltage Voltaggio (V)	Rated current Assorbimento (A)	Noise Rumorosità dB (A)	Weight Peso (Kg)
1	GK901GEV8.5T	50	8,5	345-415Δ/ 600-720Y	18,2Δ/ 10,5Y	74	93
2	GK901GEV8.5T	60	9,8	380-480Δ/ 660-720Y	18,2Δ/ 10,5Y	79	93
3	GK901GEV12.5T	50	12,5	345-415Δ/ 600-720Y	28,0Δ/ 16,2Y	74	116
4	GK901GEV12.5T	60	14,5	380-480Δ/ 660-720Y	29,0Δ/ 16,7Y	79	116
5	GK901GEV18.5T	50	18,5	345-415Δ/ 600-720Y	37,0Δ/ 21,0Y	74	126
6	GK901GEV18.5T	60	21,3	380-480Δ/ 660-720Y	39,0Δ/ 22,5Y	79	126